

John Boys & Company - Heavy Log and Timber Joinery
a subsidiary of

Nicola LogWorks Limited



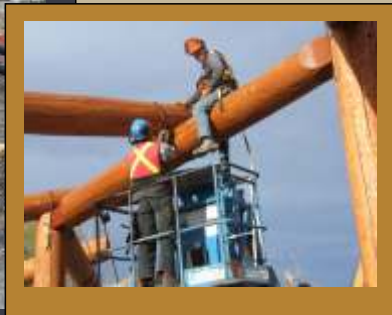
Portfolio of Commercial Work



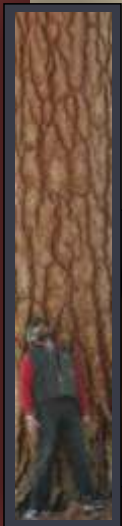
Nicola LogWorks Limited Portfolio of Commercial Work



Spence's Bridge Interior Allied tribes Memorial Center



City of Merritt- Spirit Square



Nicola LogWorks Limited Portfolio of Commercial Work



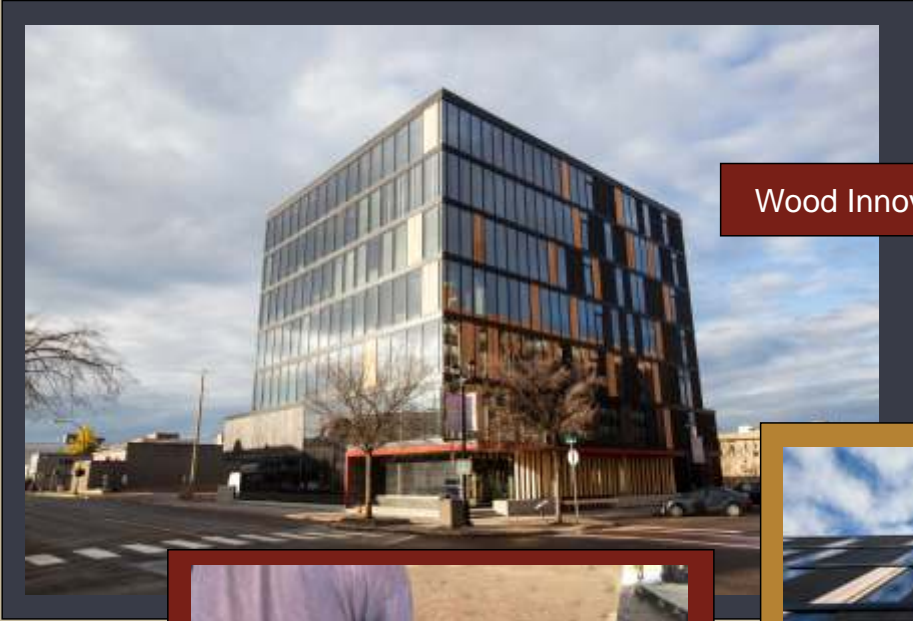
Toronto Dominion Bank - Mississauga, Ontario



Red Dog - Alaska



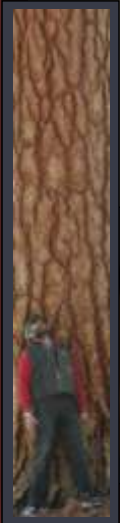
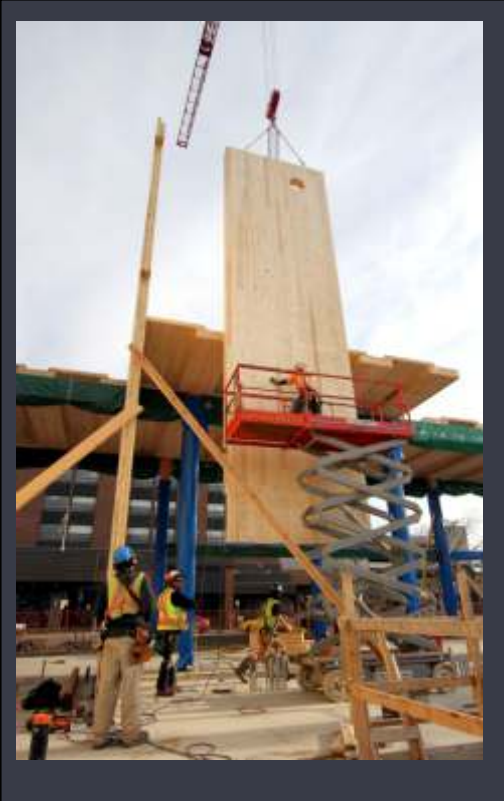
Nicola LogWorks Limited Portfolio of Commercial Work



Wood Innovation Design Centre (WDIC) Prince George



WDIC Burn-Panels



Nicola LogWorks Limited Portfolio of Commercial Work



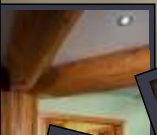
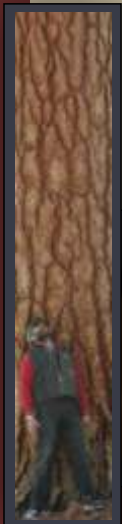
Cabela's Edmonton



Banff recreation Center

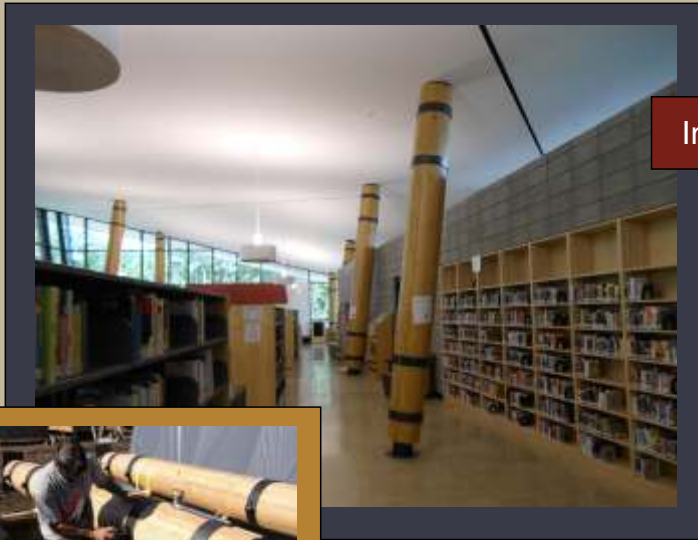


Steve Nagy photography



Nicola LogWorks Limited

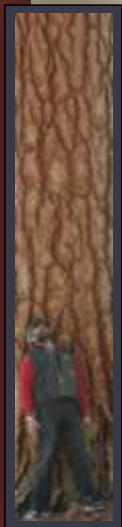
Portfolio of Commercial Work



Innisfail Library



Transport Management Centre



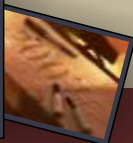
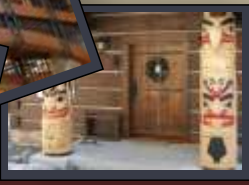
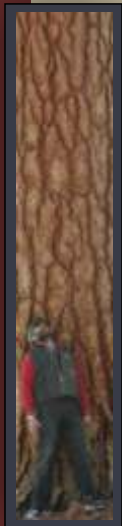
Nicola LogWorks Limited Portfolio of Commercial Work



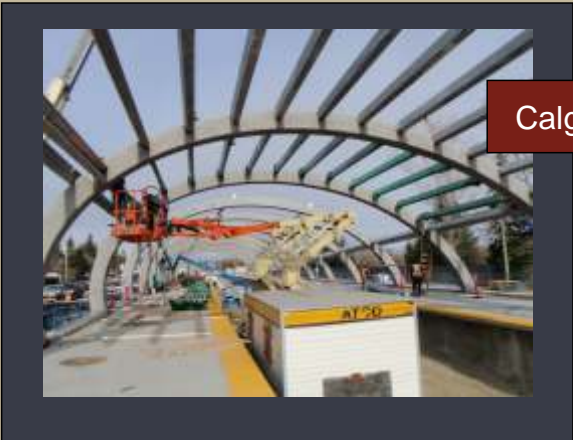
Selkirk College Gathering place



Joyce Dunn Theatre Chase



Nicola LogWorks Limited Portfolio of Commercial Work



Calgary Light Rapid Transit



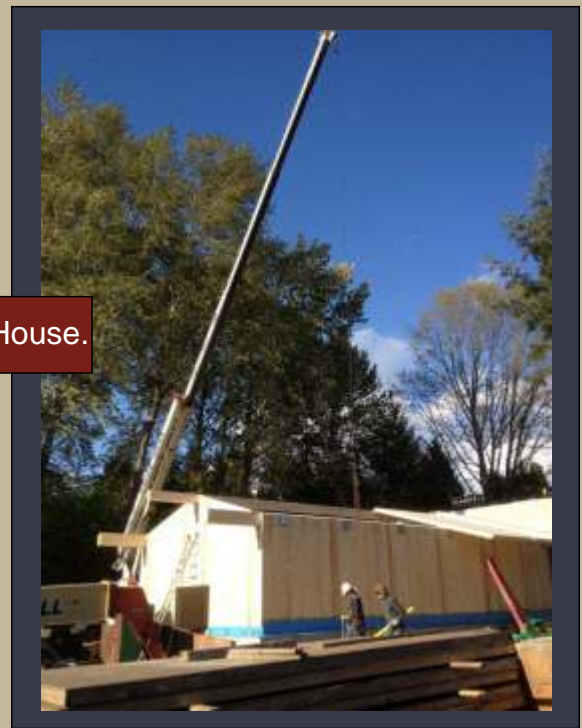
Eagle's Nest development NC



Nicola LogWorks Limited Portfolio of Commercial Work



Suncor Observation Point



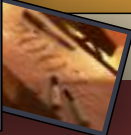
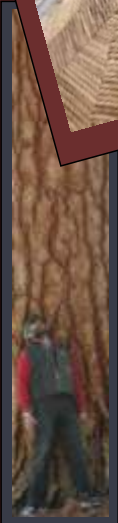
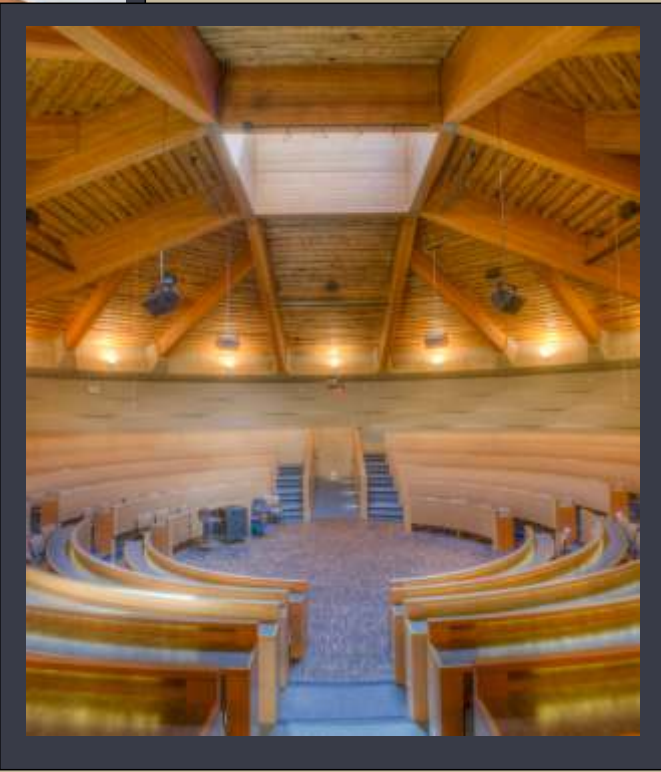
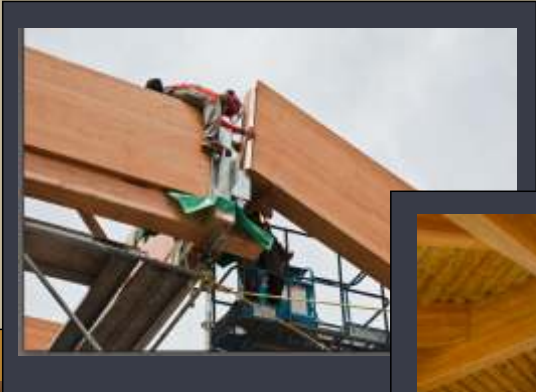
City of Burnaby Duthie Pump House.



Nicola LogWorks Limited Portfolio of Commercial Work



Thompson Rivers University Auditorium



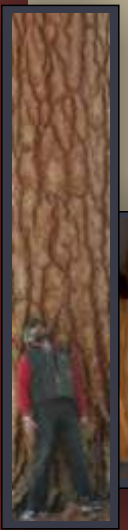
Nicola LogWorks Limited Portfolio of Commercial Work



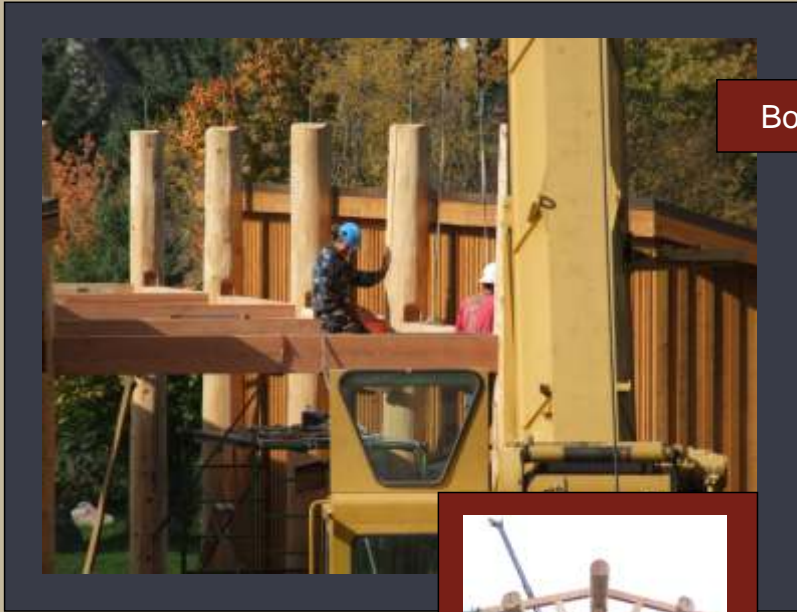
RCMP Golden BC



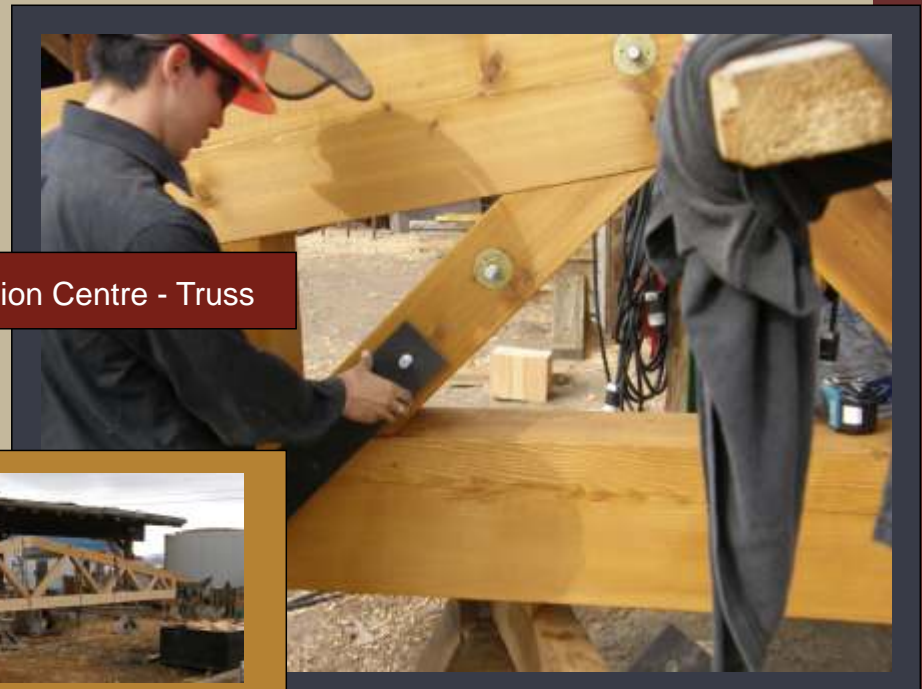
Featuring "The Machine"



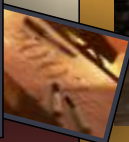
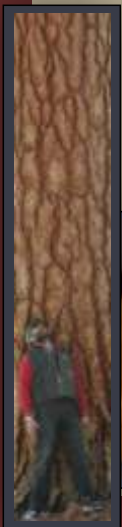
Nicola LogWorks Limited Portfolio of Commercial Work



Boston Bar Indian Band Commercial Centre



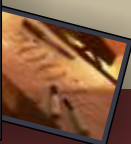
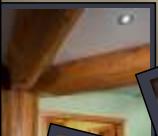
Recreation Centre - Truss



Nicola LogWorks Limited Portfolio of Commercial Work



UBC Okanagan Fitness Center



Nicola LogWorks Limited Portfolio of Commercial Work

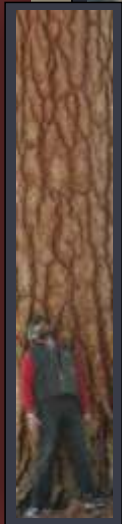


Fort Mac Airport



Fort McMurray Airport - Revisited October 2014

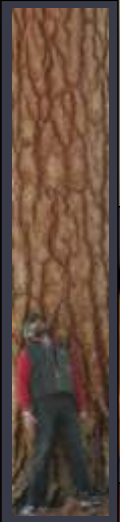
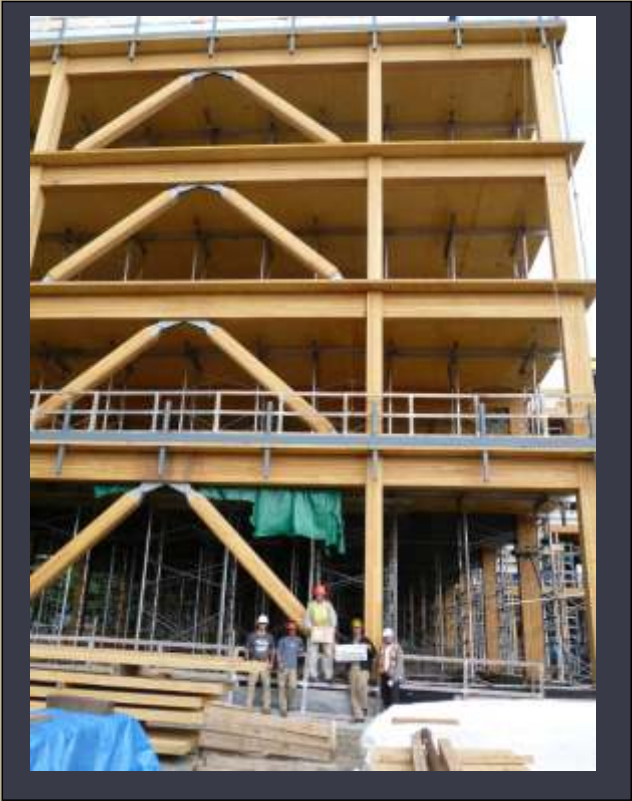
Glu-Lam and CLT installation by Nicola LogWorks & Team 2012



Nicola LogWorks Limited Portfolio of Commercial Work



UBC ESSB



Nicola LogWorks Limited Portfolio of Commercial Work



UBC ESSB Stair install

